

# Baulkham Hills High Newsletter

[www.baulkhamhillshighschool.com.au](http://www.baulkhamhillshighschool.com.au)



**CAPA Excursion - Biennale, Barangaroo**  
More information on page 3&4

## In this issue:

From the Principal's Desk

Baulko News – Biennale, Barangaroo CAPA Excursion

Careers News

Website Link: <http://www.baulkhamhillshighschool.com.au>

### APPLICATION FOR EXTENDED LEAVE (3 DAYS OR MORE)

Pick up an Application for Extended Leave – Travel Form from the office if you are going on leave for 3 days or more. This needs to be approved by the Principal.

## From the principal's desk:

As the end of Term 2 approaches, tests and assessments for students across the school are scheduled. All students will receive notification of these tasks. May I encourage students (and parents and carers) to be prepared, supportive and organised, and to look after yourselves. Usual school attendance expectations continue to apply for all students. Advice and ideas to assist in supporting students at this particular time can be found at

<https://au.reachout.com/study-work-and-money/exam-stress>.

Our students are in the midst of the "Push Up Challenge". You can follow the school's progress at <https://www.thepushupchallenge.com.au/fundraisers/BaulkhamHillsHighSchool>. Let's see if we can reach the goal!

Cont. P2

14 June 2022



## Calendar 2022

This calendar is subject to change so please check carefully each week for any alterations. A whole year calendar is on the school website at [www.baulkhamhillshighschool.com.au](http://www.baulkhamhillshighschool.com.au)

### Term 2

<b>Week 8</b>
<b>Monday 13 June – QUEENS BIRTHDAY PUBLIC HOLIDAY</b>
<b>Tuesday 14 June</b> Y8 Subject Selection Information morning P1&2 for students
<b>Wednesday 15 June</b> Year 8 Camp – Tea Gardens 15/6 to 17/6 incl. APSMO – Aust Problem Solving Mathematics Olympiad 15/6-17/6
<b>Thursday 16 June</b>
<b>Friday 17 June</b>
<b>Week 9</b>
<b>Monday 20 June</b> Y11 Assessment weeks 20/6 to 1/7 incl.
<b>Tuesday 21 June</b> Y12 Latin Study Day – Barker College
<b>Wednesday 22 June</b>
<b>Thursday 23 June</b> Y7 and Y10 Vaccinations (Fletcher)
<b>Friday 24 June</b> Y7 and Y10 Peer Support Picnic Y9 Geography Excursion - Barangaroo
<b>Week 10</b>
<b>Monday 27 June</b> Y11 Assessment weeks 20/6 to 1/7 incl.
<b>Tuesday 28 June</b> Anti-Racism Awareness Day
<b>Wednesday 29 June</b> Year 12 Recognition Assembly
<b>Thursday 30 June</b>
<b>Friday 1 July</b> Y10 History Elective Excursion

### Term 3

<b>Week 1</b>
<b>Monday 18 July</b> School Development Day – Staff Only Pupil Free Day
<b>Tuesday 19 July</b>
<b>Wednesday 20 July</b>
<b>Thursday 21 July</b> Year 8 Wellbeing Day
<b>Friday 22 July</b> Y10 History Elective Excursion to Luna Park
<b>Week 2</b>
<b>Monday 25 July</b>
<b>Tuesday 26 July</b> Sydney West Athletics Championship Day 1
<b>Wednesday 27 July</b> Sydney West Athletics Championship Day 2
<b>Thursday 28 July</b> APSMO - Australian Problem Solving Mathematics Olympiad 27/7-29/7
<b>Friday 29 July</b>

Subject Selection information is being distributed to students in Years 8 and 10. An information evening will be held on Monday 20 June.

Please remember to check your students for Covid symptoms and follow close contact protocols. As regards Year 8 Camp, the guidelines from the NSW DoE specify that "no student or staff member identified as a close contact is permitted to participate in overnight excursions, including school camps." See <https://education.nsw.gov.au/covid-19/advice-for-families> for further details.

**Wayne Humphreys**  
**Principal**

### ABSENCE EXPLANATIONS

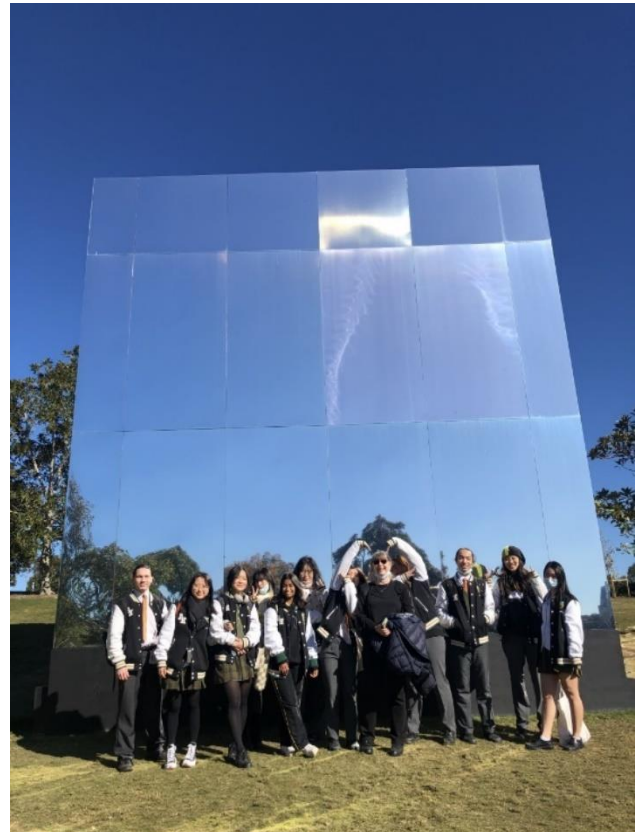
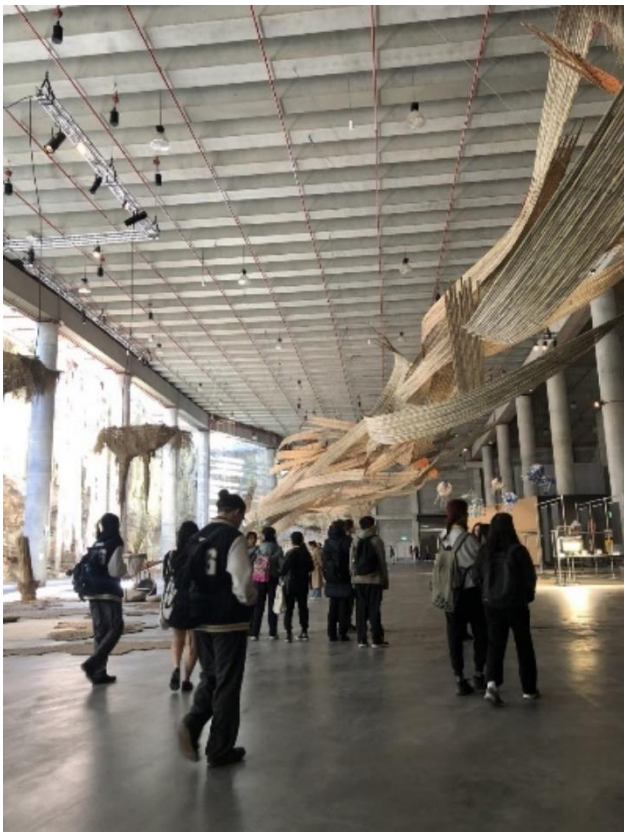
Parents are required to provide an explanation of absence to the school on the day of absence or **within seven (7) days** from the first day of any period of absence.

***If a student is absent for three (3) days or more (Not Covid) a MEDICAL CERTIFICATE is required.***

## Baulko News

### Biennale, Barangaroo CAPA Excursion

Our students had the opportunity to experience specialised exhibition tour guided by a knowledgeable educator at the Biennale, Barangaroo. An exhibition which only happens once every two years, students participated in a rich learning environment built on reciprocal sharing and exchange, grounded in discussion and hands-on investigation. It was an amazing experience as the students were able to witness firsthand the special curatorial choices, site-specific installations and view performance artworks, which is beneficial to their Preliminary and HSC studies. Thank you to Mrs Lockley and Mrs Meagher for supporting their students on this great Bi-annual event.





### Biennale, Barangaroo





## Explore



**9**

*My career profile activities*



**358**

*occupation profiles*



Approx.  
**15,000**  
*courses*



**33**

*career bullseyes*



**300+**

*videos*



**100+**

*career stories*



**100+**

*career articles*



Join over  
**1 million**  
*registered users*

(as at 31 December 2021)

## What is myfuture?

myfuture is Australia's National Career Information Service. It provides online resources to explore career pathways and tools to develop self-knowledge for career decision-making.

myfuture encourages students to consider how their interests, values and skills relate to a wide range of career pathways. It provides a complete and unbiased picture of opportunities, by showcasing both higher education and vocational education and training (VET) courses.

Resources are designed to support three key audiences:



### Students

Complete the short *My career profile* activities to identify students' interests, skills and values and generate a list of suggested occupations, or use the *Career bullseyes* to discover occupations related to school learning areas. Open up new possibilities by researching industries, occupations and courses and by exploring career stories shared by young people and articles contributed by experts. Save and revisit favourite content and activity results.



### Teachers and career practitioners

A special section of the site contains resources to support teachers and career practitioners. It includes video libraries, resources to embed career learning across the curriculum, myfuture's recent webinars, newsletters and *insights* papers, and a range of high-quality content and resources written by career development and education experts.



### Parents and carers

The earliest and often the most powerful learning about careers is shaped by the adults in a child's life. The resources curated in the *Parents and carers* section of myfuture are designed to assist these key influencers to begin the conversation with their child about the world of work.

## How to access myfuture

myfuture is funded by Australian state and territory governments.

Visit [www.myfuture.edu.au](http://www.myfuture.edu.au) to sign up for a free account and check the box to receive up-to-date career information via email.



/findingmyfuture



@myfutureAU



myfuture\_australia



[myfuture.edu.au](http://myfuture.edu.au)



## MEDICAL RESEARCH SCHOOL QUIZ



13<sup>th</sup> May to 13<sup>th</sup> July 2022



Open to Year 7 – 12 students

***Great prizes to be won!***

33 multiple choice questions that will test your knowledge and inspire your imagination (+ one bonus question)

Enter online @ [asmr.org.au/asmr-mrw/asmr-mrw-schools-quiz/](https://asmr.org.au/asmr-mrw/asmr-mrw-schools-quiz/)



<https://www.facebook.com/theASMR/>



@TheASMR1



**sanofi**

**CSL**

National sponsors of ASMR  
Medical Research Week® 2022



Australian Government  
National Health and Medical Research Council  
National supporter of ASMR  
Medical Research Week® 2022

The Australian Society for Medical Research ACN 000599235 - ABN 18 000 599 235 Level 7, 37 Bligh Street, Sydney, 2000  
Ph: (02) 9230 0333, Fax: (02) 9230 0339 Email: [asmr@asmr.org.au](mailto:asmr@asmr.org.au) Website: [www.asmr.org.au](http://www.asmr.org.au) Snr Executive Officer: Catherine West



## Enter to win a share of \$7,600 in prizes!

Hello,

- Your school is invited to participate in this year's **Tax, Super + You** competition
- Students can start working on their entries now
- The competition is open 30 May – 19 August 2022

### What's the challenge?

We want your students to unleash their creativity and explain tax and super in a fun and imaginative way. Not only will your students gain an understanding of this important topic, they also have a chance to win some great prizes for themselves and their schools. Students can enter individually or as part of a team.

The entry topics for 2022 are:

- **Junior (Year 7–9):** Tax, Super + Me – How tax impacts me in my daily life.
- **Senior (Year 10–12):** Top four things I need to know about tax and super when I start my first job.

### What you can do

Tell your students about the competition, help them explore tax and super, and encourage them to get creative! You could even use the competition as a classroom activity. You can find free teaching resources at our new and improved Tax, Super + You website.

The new website makes it easier and quicker to find engaging content and activities, and plan face to face or virtual lessons that are aligned to the Australian and state curriculums. It's available at [taxsuperandyou.gov.au](https://taxsuperandyou.gov.au)

### Prizes and entry details

The following prizes will be awarded for each category:

- First prize winner (\$600 plus \$600 for their school).
- Second prize winner (\$400 plus \$400 for their school).
- Third prize winner (\$300 plus \$300 for their school).
- People's Choice Award winner (\$600 plus \$600 for their school).

We've included posters with this letter to help spread the word in your school.

To find out more, go to [taxsuperandyou.gov.au/competition](https://taxsuperandyou.gov.au/competition)

Kind regards,

The Tax, Super + You competition team

Australian Taxation Office

## Careers News Term 2 2022

### Year 12 Uni Applications

Year 12 have been sent videos and PP slides of the UAC process. Uni/alumni speakers visit t in Term 2.

### Year 10 Google Classroom

Year 10 have access to a specialised Google Classroom and have been emailed the code to access. All Year 10 students have access to the Morrisby Online Careers Profiling which provides university course and career suggestions ahead of subject selection. Year 10 students have access to a hard copy of the Steps to Uni for Year 10 Students publication from UAC from May.

### Helping your child with their career development

To help your child with their career development process, please see this link: <https://myfuture.edu.au/assist-your-child>. There is also a National Careers Week on demand webinar for Parents & Guardians – [Help guide your child to a career path that is right for them](#).

### Careers Subscriptions

#### Years 7/8/9

Years 7/8/9 students have been emailed a code to complete the junior version of the Morrisby Profile (called Morrisby Careers).

#### Year 10 into 11

- Morrisby Online Career Profiling (aptitudes, personality, interests)
- Study Work Grow (guides, updates, portfolio) (parents can also sign up via code in Google Classroom)
- The Careers Department (virtual work experience, audios, videos)

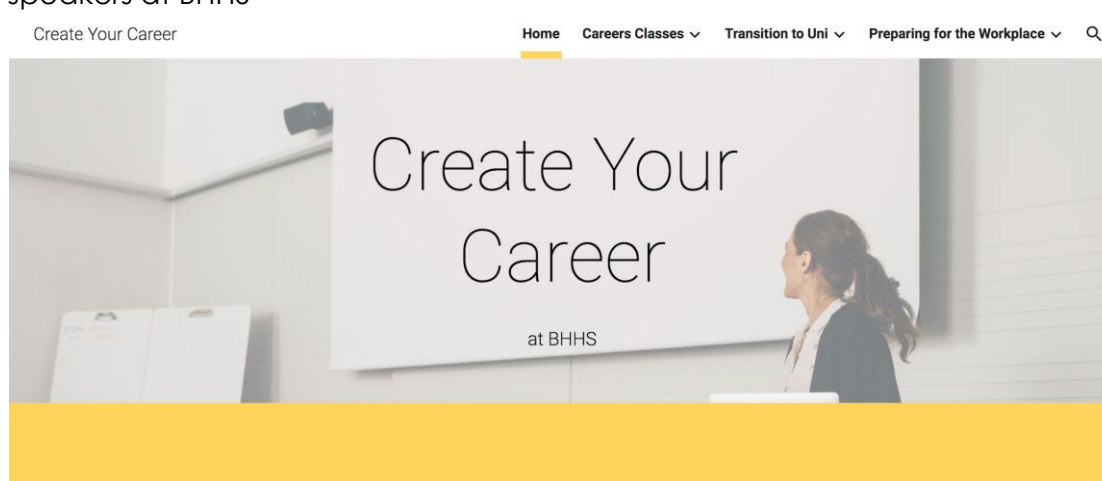
#### Year 12

Year 12 have access to all of the above subscriptions plus the following:

- From High School to Hireable (online interview skills course)

Google Classroom updates are posted for Year 12 including:

- Book a Careers appointment spreadsheet
- Careers Checklists & deadlines
- Uni speakers at BHHS





Create Your Career

Home Careers Classes Transition to Uni Preparing for the Workplace

# Careers

- Morrisby Online Profile
- Written Applications
- Work Experience
- Future Work Skills
- Strengths
- Subject Selection
- Open Days
- Transition to University
- Interview Skills
- World of Work

## Year 10 Careers Classes

Term 1 (Self Awareness) - Overview of Careers Education/Morrisby Online Careers Profiling/Work Experience/CV Writing

Students are introduced to resources and opportunities available to them (Google Classroom)

Create Your Career

Home Careers Classes Transition to Uni Preparing for the Workplace

# Transition to

- Finding a uni course
- Open Days
- ☒ Studying in NSW (UAC)
- Studying interstate
- Studying overseas
- Scholarships
- How to pay for uni
- Elite Athletes/Perform...
- Tips for Transition

Transition to uni tips for Year 12 - things you may not know!

<https://sites.google.com/bhhs.com.au/create-your-career-at-bhhs/transition-to-uni>

Create Your Career

Home Careers Classes Transition to Uni Preparing for the Workplace

# Preparing for the Workplace

- Portfolios
- Written Applications
- Interview Skills
- Work Experience
- Industry Info
- Labour Market Info
- Future of Work
- Entrepreneurship
- Lifelong Learning

INTERESTS

SKILLS

EDUCATION & TRAINING

myfuture

[www.myfuture.edu.au](http://www.myfuture.edu.au)

### Bus Travel

The **bus stop on Old Northern Rd in front of Baulkham Hills TAFE** is used each afternoon by approximately 100 students. Students have the privilege and responsibility of accessing this bus stop through the TAFE. I would remind students to be very careful and considerate when using and accessing this bus stop, waiting for a bus, and moving to the kerb to get on a bus. Buses sometimes approach the stop very quickly, with the front of the bus coming over the edge of the kerb. Please always demonstrate courtesy and safety, and remember that there is always another bus. Further to this, may I please remind all students that the **wearing of masks on public transport remains compulsory** in line with NSW Department of Health Public Health Order.

**COVID-19** - A reminder that **regularly updated COVID guidelines** are available at <https://education.nsw.gov.au/covid-19/advice-for-families>

### Student pickup after school

A reminder about parking and picking up around our school in the afternoons, especially in the school bus bay, Carver Crescent, Christopher Street, Coronation Road, and Baulkham Hills TAFE areas.

Please ensure you follow all traffic rules (especially traffic lights and not parking across driveways) when you are in these areas. You could even have your student walk a little but further away from the school gate – to assist their physical health, and alleviate the heavy traffic at the end of the school day.

The Hills Shire Council will have compliance officers at various times in these locations to ensure all drivers are following required traffic rules.

### NSW Health Updates

Please follow the link below to fact sheets from NSW Health as regards the linked topics.

- Japanese encephalitis - [https://www.health.nsw.gov.au/Infectious/factsheets/Pages/japanese\\_encephalitis.aspx](https://www.health.nsw.gov.au/Infectious/factsheets/Pages/japanese_encephalitis.aspx)
- Mosquitoes - <https://www.health.nsw.gov.au/Infectious/factsheets/Pages/mosquito.aspx>
- Japanese encephalitis virus and mosquito bite avoidance - <https://www.health.nsw.gov.au/Infectious/factsheets/Factsheets/japanese-encephalitis-questions-answered.pdf>



## Lost Property on Hills Bus

### Lost Property Contact Details

For enquiries about lost items, please contact the relevant depot for further information.

Alternatively, if your matter is urgent please contact Transport for NSW on 131 500.

Not sure who to contact? Visit Lost Property – Transport for NSW.

#### Hillsbus

☎ (02) 9890 0000

✉ [customer.service@cdcbus.com.au](mailto:customer.service@cdcbus.com.au)

### Transport for NSW Face Masks are Mandatory

This is a reminder to all students that face masks are mandatory whilst waiting for and travelling on public transport, including all school buses. It is also mandatory for all students to tap on and off using a valid Opal card or eftpos card, every time they travel.

It is important for students that failing to wear a mask or tap on/off risk a fine by transport inspectors.

I have added a link below to Transport for NSW showing travel offences and fines for your convenience and information.

<https://transportnsw.info/travel-info/using-public-transport/travel-offences-fines-penalties>